

MACKINAC ISLAND OEC MEETING

Mackinac Island 2022



TABLE OF CONTENTS

<u>Table of Contents</u>	<u>2</u>
<u>Welcome</u>	<u>3</u>
<u>Industry Partners</u>	<u>4</u>
<u>Schedule</u>	<u>5</u>
<u>Course Notes</u>	<u>8</u>
<u>Speakers</u>	<u>10</u>
<u>Upcoming Conferences</u>	<u>13</u>
<u>Information, Awareness, & Improvement Talks</u>	<u>16</u>
<u>Gold Industry Partners</u>	<u>22</u>
<u>Silver Industry Partners</u>	<u>26</u>
<u>Supporters</u>	<u>30</u>

WELCOME



If this is your first OEC conference thank-you for joining us and for the many who have previously joined us in-person or streaming, we thank-you for your continued support. The philosophy of The Optometric Education Consultants (OEC) is to help optometrists enhance care of their patients through timely, clinically pertinent, and highly interactive education. OEC assembles top clinical educators to deliver high-quality COPE-approved continuing education in a relaxed, comfortable setting.

We are hosting a cocktail reception for our doctors, their guests, and our industry partners. It takes place on Friday evening, immediately following the education. Please join us in the main lodge, in the Cypress Room from 5:30-7:00.

We could not offer the pricing, meals and guest speakers without our exhibitors and ask you to take some time to visit with them during breaks. Instead of gift cards winners can receive a full refund of their registration, 50% or 25% refunds. For those Florida doctors wanting TQ we will send a link for the exams to all attendees 1-2 days after the conference. The cost of the exams is \$10 per course and certificates are issued immediately upon taking the online test. CE Broker will be updated a few days later. If you do not need the exams of course simply delete the link.

Schedules are developed with your comfort in mind, so you have time to learn, interact with exhibitors and, very importantly, relax and enjoy yourself. Regardless of the location, our conferences are always COPE accredited and Florida approved. If you hold a license outside of Florida and need additional hours consider our webinar and/or live conference schedule. We have added enduring courses that can be taken at your leisure also. Our enduring and webinar courses are all COPE approved but we ask that you confirm that this type of education is acceptable for your state.

To view upcoming webinars bookmark: [webinars](#)

To view enduring courses bookmark: [enduring](#)

To view upcoming in-person conferences details: [Live Conferences](#)

Music City Fall Classic 2022 October 21-23, 2022
Hilton Doubletree
315 4th Avenue North
Nashville, TN 37219

We are still in the planning stage for some of our 2023 conferences but below is what we can share this weekend.

Pittsburgh Power Hours, February 18-19
Marriott Pittsburgh Airport

Mid-Winter Getaway, April 14-16
Arizona Grand Resort and Spa

Sunshine State Summer Conference, June 16-18
Orlando World Center Marriott

Mackinac Island OEC Summer Meeting August 18-20
Mission Point Hotel

Music City Fall Classic TBD
Nashville, TN

Again thank-you for trusting OEC with your education needs and enjoy the island!

Greg, Joe, Vanessa, and Daysha

INDUSTRY PARTNERS

Information, Awareness, & Improvement Talks



Gold Industry Partners



Silver Industry Partners



Supporter Industry Partners



This activity is supported with unrestricted educational grants from Alcon Labs and SunPharma.

SCHEDULE



Friday, August 26, 2022

7:00am – 7:30am	Registration & Continental Breakfast with Exhibitors	Hours	CEE/TQ
7:30am-8:00am	Industry Innovation Talk – Heru Greg Caldwell, OD	N/A	N/A
8:00am – 9:40am	<i>Neuro-op Misadventures: Oops...Now What?</i> Andrew Lee, MD	2	Y
9:40AM – 10:10am	Break with Exhibitors		
10:10 am – 11:50 am	<i>What if... The Pupil Showed This?</i> Andrew Lee, MD	2	Y
11:50am – 1:30pm	Lunch & Exhibitor Talks Sight Sciences 12:00 – 12:30 Speaker Melanie Denton Dombrowski, OD		
1:30pm – 3:10pm	<i>10 Hacks for OCT Interpretation in Retina and Glaucoma</i> Mark Dunbar, OD	2	Y
3:10pm – 3:40pm	Break with Exhibitors		
3:40pm – 5:20pm	<i>Case Files from Bascom Palmer</i> Mark Dunbar, OD	2	Y
5:20pm	Conference Adjourns		
5:30pm – 7:00pm	Reception for Attendees and Industry Partners Main Lodge Cypress Room & Patio		

SCHEDULE



Saturday, August 27, 2022			
7:00am – 7:30am	Check-In & Breakfast with Exhibitors		
7:30am - 8:00am	Industry Innovation Talk RVL Speaker Greg Caldwell, OD	N/A	N/A
8:00am – 8:50am	<i>Challenges and Controversies in Prescribing Pharmaceuticals – A Discussion Between an Optometrist and Pharmacist</i> Greg Caldwell, OD and Tracy Offerdahl, PharmD	1	N
8:50am – 9:40am	<i>All About the Glands</i> Melanie Denton Dombrowski, OD	1	N
9:40am – 10:10 am	Break with Exhibitors		
10:10am – 11:00am	<i>Carotenoid Levels in Ocular Disease and Systemic Health</i> Greg Caldwell, OD	1	N
11:00am – 11:30am	Industry Innovation Talk Bausch & Lomb Speaker Michael Chaglasian, OD & Greg Caldwell, OD	N/A	N/A
11:30am-1:10pm	<i>Oral Antibiotics and Antivirals in Eye Care</i> Greg Caldwell, OD, and Tracy Offerdahl, PharmD	2	Y
1:10pm	Conference Adjourns and Exhibit Hall Closes		
1:15pm – 2:00pm	Complimentary Workshop Presented by Pharmanex		

SCHEDULE



Sunday, August 28, 2022			
7:15am – 8:00am	Check-In, & Continental Breakfast Industry Innovation Talk- Sanofi 7:30 – 8:00 Al Morier, OD		
	Concurrent Lectures		
8:00am -9:40am	<i>Ocular Disease- Interpretation and Utilization of New and Old Technologies</i> Greg Caldwell, OD	2	Y
8:00am -9:40am	<i>Prevention of Medical Errors (Florida required)</i> Joseph Sowka, OD	2	N
9:40am – 9:50am	Break		
	Concurrent Lectures		
9:50am – 11:30am	<i>Grand Rounds: Improving Eye Care and Outcomes for Patients</i> Greg Caldwell, OD	2	Y
9:50am – 11:30am	<i>Florida Jurisprudence (Florida Required)</i> Joseph Sowka, OD	2	N
11:30am	Conference Adjourns		

COURSE NOTES



COURSE NOTES



DOWNLOAD

Neuro-op Misadventures: Oops...Now What?

DOWNLOAD

What if...The Pupil Showed This?

DOWNLOAD

10 Hacks for OCT Interpretation in Retina and Glaucoma

DOWNLOAD

Case Files from Bascom Palmer

DOWNLOAD

Challenges and Controversies in Prescribing Pharmaceuticals –
A Discussion Between an Optometrist and Pharmacist

DOWNLOAD

All About the Glands

DOWNLOAD

Carotenoid Levels in Ocular Disease and Systemic Health

DOWNLOAD

Oral Antibiotics and Antivirals in Eye Care

DOWNLOAD

Ocular Disease- Interpretation and Utilization of
New and Old Technologies

DOWNLOAD

Prevention of Medical Errors

DOWNLOAD

Grand Rounds: Improving Eye Care and Outcomes for Patients

DOWNLOAD

Florida Jurisprudence

SPEAKERS



Greg Caldwell, OD, FAAO

Greg Caldwell, OD, is a 1995 graduate of the Pennsylvania College of Optometry. He completed a one-year residency in primary care and ocular disease at The Eye Institute in Philadelphia Pennsylvania. He is a fellow of the American Academy of Optometry (AAO) and a Diplomate of the American Board of Optometry (ABO).

He currently works in Duncansville and Johnstown, Pennsylvania as an ocular disease consultant. Dr. Caldwell's primary focus is the diagnosis and management of anterior and posterior segment ocular disease and he has been a participant in multiple FDA investigations. Dr. Caldwell has lectured extensively throughout the county and over twelve countries internationally. In 2010 he served as President of the Pennsylvania Optometric Association (POA) and served on the AOA Board of Trustees 2013-2016. He is President of the Blair/Clearfield Association for the Blind.



Melanie Denton, OD, MBA, FAAO

- Owner of Salisbury Eyecare and Eyewear, 1-doctor cold start practice providing advanced CL services, specialty dry eye clinic, medical eye care, and children's vision care
- Fellow of the American Academy of Optometry, member of the American Optometric Association
- Clinical Examiner for the North Carolina Board of Optometry
- Bausch and Lomb Speaker and Academic Consulting Expert
- Contributing editor to Optometry Times, published in Review of Optometry, Optometric Business, and others in the past.
- Speaker, presenting at state, local and national society meetings including SECO and AOA
- Education: University of Michigan (BS in Anthropology-Zoology 2005), Michigan College of Optometry (OD 2009), Western Carolina University (MBA 2015)

SPEAKERS



Mark T. Dunbar, OD, FAAO

Dr. Mark Dunbar has been a member of the optometric staff at the University of Miami's Bascom Palmer Eye Institute for over 30 years and currently serves as the Director of Optometric Services. He is also Co-Chairman of the Conference Advisory Board for Vision Expo.

Dr Dunbar is a Fellow of the American Academy of Optometry and is a founding member of both the Optometric Glaucoma Society (OGS) and the Optometric Retina Society (ORS). Dr. Dunbar also serves on the Editorial Boards for Review of Optometry where he writes the monthly column "The Retina Quiz. "



Andrew G. Lee, MD

Andrew G. Lee, M.D. is chair of the Blanton Eye Institute at Houston Methodist Hospital in Houston, Texas and is Professor of Ophthalmology, Neurology, and Neurosurgery at Weill Cornell Medicine and holds joint appointments at Baylor College of Medicine; Texas A and M College of Medicine; the University of Iowa; the University of Buffalo; University of Texas Medical Branch and the UT MD Anderson Cancer Center.

Dr Lee has served on the Editorial Board of 20 ophthalmic journals including JAMA Ophthalmology; Survey of Ophthalmology; the American, the Canadian, and the Japanese Journals of Ophthalmology, the Journal of Neuro-ophthalmology, and Eye.

He has published over 500 peer-reviewed publications and eight full textbooks in ophthalmology.

He has been the invited speaker at over 300 national and international eye meetings and has given 14 named lectureships.

Dr. Lee has received the American Academy of Ophthalmology (AAO) honor award, senior honor award, secretariat award, and lifetime achievement award. He is a past President of the North American Neuro-ophthalmology Society (NANOS).

He has a special interest in resident education and has received the resident teaching award 8 times at five different academic institutions.

SPEAKERS



Tracy Offerdahl, PharmD, BPharm, RPh

Dr. Offerdahl attended Temple University School of Pharmacy in Philadelphia, PA, for both her undergraduate and graduate degrees. Upon completion of her Doctor of Pharmacy degree, she completed a Residency at Temple University Hospital, where much of her time was spent in internal medicine and infectious diseases.

She is currently on faculty at Salus University in the Department of Optometry, where she is the course director and instructor for all systemic pharmacology courses for students in the optometry, audiology, and physician assistant programs. Additionally, she is a practicing clinical pharmacist with a pharmacy and a patient care practice site in Rosemont, PA.

Dr. Offerdahl is currently earning another degree in holistic medicine, as well as additional certifications in veterinary pharmacy. She lectures extensively in the optometry community.



Joseph Sowka, OD, FAAO, Diplomate

Dr. Joseph Sowka is an attending optometric physician at Center for Sight in Sarasota, Florida, a large medical-surgical practice where he focuses on glaucoma management and neuro-ophthalmic disease. He was formerly Professor of Optometry at Nova Southeastern University College of Optometry for 28 years where he served as Chief of The Advanced Care Service and Director of the Glaucoma Service at the College's Eye Institute. He was the Program Coordinator and Supervisor for the Ocular Disease Residency. Dr. Sowka is a founding member of both the Optometric Glaucoma Society and Optometric Retina Society. He is also the Founder and Chair of the Neuro-Ophthalmic Disorders in Optometry Special Interest Group for the American Academy of Optometry. Dr. Sowka is a Glaucoma Diplomate of the American Academy of Optometry. He is a partner and co-owner of Optometric Education Consultants.

UPCOMING CONFERENCES



**4th Annual Music City Fall
Classic, Nashville
October 21-23, 2022**



**Pittsburgh Power Hours
February 18-19, 2023**

**This activity is supported with unrestricted educational grants from
Alcon Labs and SunPharma.**

UPCOMING CONFERENCES



**This activity is supported with unrestricted educational grants from
Alcon Labs and SunPharma.**

UPCOMING CONFERENCES



**This activity is supported with unrestricted educational grants from
Alcon Labs and SunPharma.**

INFORMATION, AWARENESS, & IMPROVEMENT TALKS

This activity is supported with
unrestricted educational grants
from Alcon Labs and
SunPharma.





THE HORSEPOWER YOU NEED TO LOWER IOP

Powerful IOP reduction with excellent tolerability^{1,2}

VYZULTA delivered **up to 9.1 mmHg mean IOP reduction** from baseline in pivotal trials.^{1,2*}

TAKE A TEST RIDE AT VYZULTAHCP.COM

*Pivotal study designs: Two Phase 3, randomized, multicenter, parallel-group studies, APOLLO and LUNAR, evaluating noninferiority of once-daily VYZULTA vs twice-daily timolol maleate 0.5% in patients with open-angle glaucoma or ocular hypertension. Primary endpoint was IOP measured at 9 assessment time points in study eye. APOLLO (VYZULTA, n=284; timolol, n=133) and LUNAR (VYZULTA, n=278; timolol, n=136).^{2,3}

INDICATION

VYZULTA® (latanoprostene bunod ophthalmic solution), 0.024% is indicated for the reduction of intraocular pressure (IOP) in patients with open-angle glaucoma or ocular hypertension.

IMPORTANT SAFETY INFORMATION

- Increased pigmentation of the iris and periorbital tissue (eyelid) can occur. Iris pigmentation is likely to be permanent
- Gradual changes to eyelashes, including increased length, increased thickness, and number of eyelashes, may occur. These changes are usually reversible upon treatment discontinuation
- Use with caution in patients with a history of intraocular inflammation (iritis/uveitis). VYZULTA should generally not be used in patients with active intraocular inflammation
- Macular edema, including cystoid macular edema, has been reported during treatment with prostaglandin analogs. Use with caution in aphakic patients, in pseudophakic patients with a torn posterior lens capsule, or in patients with known risk factors for macular edema
- There have been reports of bacterial keratitis associated with the use of multiple-dose containers of topical ophthalmic products that were inadvertently contaminated by patients
- Contact lenses should be removed prior to the administration of VYZULTA and may be reinserted 15 minutes after administration
- Most common ocular adverse reactions with incidence $\geq 2\%$ are conjunctival hyperemia (6%), eye irritation (4%), eye pain (3%), and instillation site pain (2%)

For more information, please see Brief Summary of full Prescribing Information on adjacent page.

References: 1. VYZULTA Prescribing Information. Bausch & Lomb Incorporated. 2. Weinreb RN, Scassellati Sforzolini B, Vittitow J, Liebmann J. Latanoprostene bunod 0.024% versus timolol maleate 0.5% in subjects with open-angle glaucoma or ocular hypertension: the APOLLO study. *Ophthalmology*. 2016;123(5):965-973. 3. Medeiros FA, Martin KR, Peace J, Scassellati Sforzolini B, Vittitow JL, Weinreb RN. Comparison of latanoprostene bunod 0.024% and timolol maleate 0.5% in open-angle glaucoma or ocular hypertension: the LUNAR study. *Am J Ophthalmol*. 2016;168:250-259.



Intelligent Heat in Your Expert Hands.

Unobstructed care in your future.



**Treat DED by targeting
obstructive MGD with
the TearCare® System.**

Indications for Use: The TearCare® System is intended for the application of localized heat therapy in adult patients with evaporative dry eye disease due to meibomian gland dysfunction (MGD), when used in conjunction with manual expression of the meibomian glands.

The TearCare® System may not be right for everyone. Please see Instructions for Use or visit [TearCare.com](https://www.tearcare.com) for contraindications, warnings, precautions and adverse events.



Stop by the Heru booth at OEC Mackinac Island for a demo.

No eye left behind

Perform a visual field in 40 seconds
per eye with Heru's Fast Pattern exam.



Screen Every Patient.
Detect Disease Early.
Enhance Patient Care.



BORN OUT OF NEED AND INNOVATION.
Bascom Palmer
Eye Institute
UNIVERSITY OF MIAMI HEALTH SYSTEM

9 Vision Exams

5 CPT Codes

1 Wearable Solution

UPLIFTED

Give Ptosis Patients an EYE-OPENING Lift
With a Daily Drop of Upneeq® (oxymetazoline
hydrochloride ophthalmic solution), 0.1%¹

The only FDA-approved prescription eyedrop proven to lift
upper eyelids in adults with acquired blepharoptosis (low-lying lids)¹

Learn more at Upneeq.com.

INDICATION

Upneeq® (oxymetazoline hydrochloride ophthalmic solution), 0.1% is indicated for the treatment of acquired blepharoptosis in adults.

IMPORTANT SAFETY INFORMATION

WARNINGS AND PRECAUTIONS

- Alpha-adrenergic agonists as a class may impact blood pressure. Advise Upneeq patients with cardiovascular disease, orthostatic hypotension, and/or uncontrolled hypertension or hypotension to seek medical care if their condition worsens.
- Use Upneeq with caution in patients with cerebral or coronary insufficiency or Sjögren's syndrome. Advise patients to seek medical care if signs and symptoms of potentiation of vascular insufficiency develop.
- Upneeq may increase the risk of angle closure glaucoma in patients with untreated narrow-angle glaucoma. Advise patients to seek immediate medical care if signs and symptoms of acute narrow-angle glaucoma develop.
- Patients should not touch the tip of the single patient-use container to their eye or to any surface, in order to avoid eye injury or contamination of the solution.

ADVERSE REACTIONS

Adverse reactions that occurred in 1-5% of subjects treated with Upneeq were punctate keratitis, conjunctival hyperemia, dry eye, blurred vision, instillation site pain, eye irritation, and headache.

DRUG INTERACTIONS

- Alpha-adrenergic agonists, as a class, may impact blood pressure. Caution in using drugs such as beta blockers, anti-hypertensives, and/or cardiac glycosides is advised. Caution should also be exercised in patients receiving alpha adrenergic receptor antagonists such as in the treatment of cardiovascular disease, or benign prostatic hypertrophy.
- Caution is advised in patients taking monoamine oxidase inhibitors which can affect the metabolism and uptake of circulating amines.

To report SUSPECTED ADVERSE REACTIONS or product complaints, contact RVL Pharmaceuticals at 1-877-482-3788. You may also report SUSPECTED ADVERSE REACTIONS to the FDA at 1-800-FDA-1088 or www.fda.gov/medwatch.

Please see next page for Brief Summary of full Prescribing Information.

Reference: 1. Upneeq® (oxymetazoline hydrochloride ophthalmic solution), 0.1%. [Prescribing Information].

RVL
PHARMACEUTICALS, INC.

Distributed by: RVL Pharmaceuticals, Inc.
Bridgewater, NJ 08807

Customer Service 1-866-600-4799

Upneeq is a registered trademark of RVL Pharmaceuticals, Inc.

©2021 RVL Pharmaceuticals, Inc.

PM-US-UPN-0197 01/21

Learn more at Upneeq.com



UPNEEQ.
(oxymetazoline hydrochloride
ophthalmic solution), 0.1%*

*Each mL of Upneeq contains 1 mg of oxymetazoline hydrochloride, equivalent to 0.09 mg (0.09%) of oxymetazoline free base.

Eye-Opening Possibilities

See the TEPEZZA Difference

TEPEZZA decreases proptosis, diplopia, and the signs and symptoms of Thyroid Eye Disease (TED), without concomitant steroids (vs placebo at Week 24)¹⁻⁴

BASELINE



Proptosis:

19 mm OD, 20.5 mm OS⁵

AT WEEK 21



Proptosis:

17 mm OD, 18 mm OS⁵

Actual Patient. Individual results may vary.

TEPEZZA met its primary endpoint vs placebo in 2 randomized, placebo-controlled trials ($P < 0.001$), defined as proptosis responder rate at Week 24 (percentage of patients with ≥ 2 -mm reduction in proptosis in the study eye from baseline).¹⁻³

Photos provided with permission from Raymond Douglas, MD, PhD.

OD, oculus dexter; OS, oculus sinister.

Learn more at TEPEZZAhcp.com

INDICATION

TEPEZZA is indicated for the treatment of Thyroid Eye Disease.

IMPORTANT SAFETY INFORMATION

Warnings and Precautions

Infusion Reactions: TEPEZZA may cause infusion reactions. Infusion reactions have been reported in approximately 4% of patients treated with TEPEZZA. Reported infusion reactions have usually been mild or moderate in severity. Signs and symptoms may include transient increases in blood pressure, feeling hot, tachycardia, dyspnea, headache, and muscular pain. Infusion reactions may occur during an infusion or within 1.5 hours after an infusion. In patients who experience an infusion reaction, consideration should be given to premedicating with an antihistamine, antipyretic, or corticosteroid and/or administering all subsequent infusions at a slower infusion rate.

Preexisting Inflammatory Bowel Disease: TEPEZZA may cause an exacerbation of preexisting inflammatory bowel disease (IBD). Monitor patients with IBD for flare of disease. If IBD exacerbation is suspected, consider discontinuation of TEPEZZA.

Hyperglycemia: Increased blood glucose or hyperglycemia may occur in patients treated with TEPEZZA. In clinical trials, 10% of patients (two-thirds of whom had preexisting diabetes or impaired glucose tolerance) experienced hyperglycemia. Hyperglycemic events should be managed with medications for glycemic control, if necessary. Monitor patients for elevated blood glucose and symptoms of hyperglycemia while on treatment with TEPEZZA. Patients with preexisting diabetes should be under appropriate glycemic control before receiving TEPEZZA.

Adverse Reactions

The most common adverse reactions (incidence $\geq 5\%$ and greater than placebo) are muscle spasm, nausea, alopecia, diarrhea, fatigue, hyperglycemia, hearing impairment, dysgeusia, headache, and dry skin.

References: 1. TEPEZZA (teprotumumab-trbw) [prescribing information] Horizon. 2. Douglas RS, Kahaly GJ, Patel A, et al. Teprotumumab for the treatment of active thyroid eye disease. *N Engl J Med.* 2020;382(4):341-352. 3. Smith TJ, Kahaly GJ, Ezra DG, et al. Teprotumumab for thyroid-associated ophthalmopathy. *N Engl J Med.* 2017;376(18):1748-1761. 4. Smith TJ, Kahaly GJ, Ezra DG, et al. Teprotumumab for thyroid-associated ophthalmopathy. *N Engl J Med.* 2017;376(18)(suppl):1748-1761. https://www.nejm.org/doi/suppl/10.1056/NEJMoa1614949/suppl_file/nejmoa1614949_appendix.pdf. 5. Data on File. Horizon, December 2020.

For additional information on TEPEZZA, please see Full Prescribing Information at TEPEZZAhcp.com.

GOLD INDUSTRY PARTNERS

This activity is supported with
unrestricted educational grants
from Alcon Labs and
SunPharma.



Find Your **Wow Moment**

When **Good Enough is Not Enough**

Choose **PROKERA®**



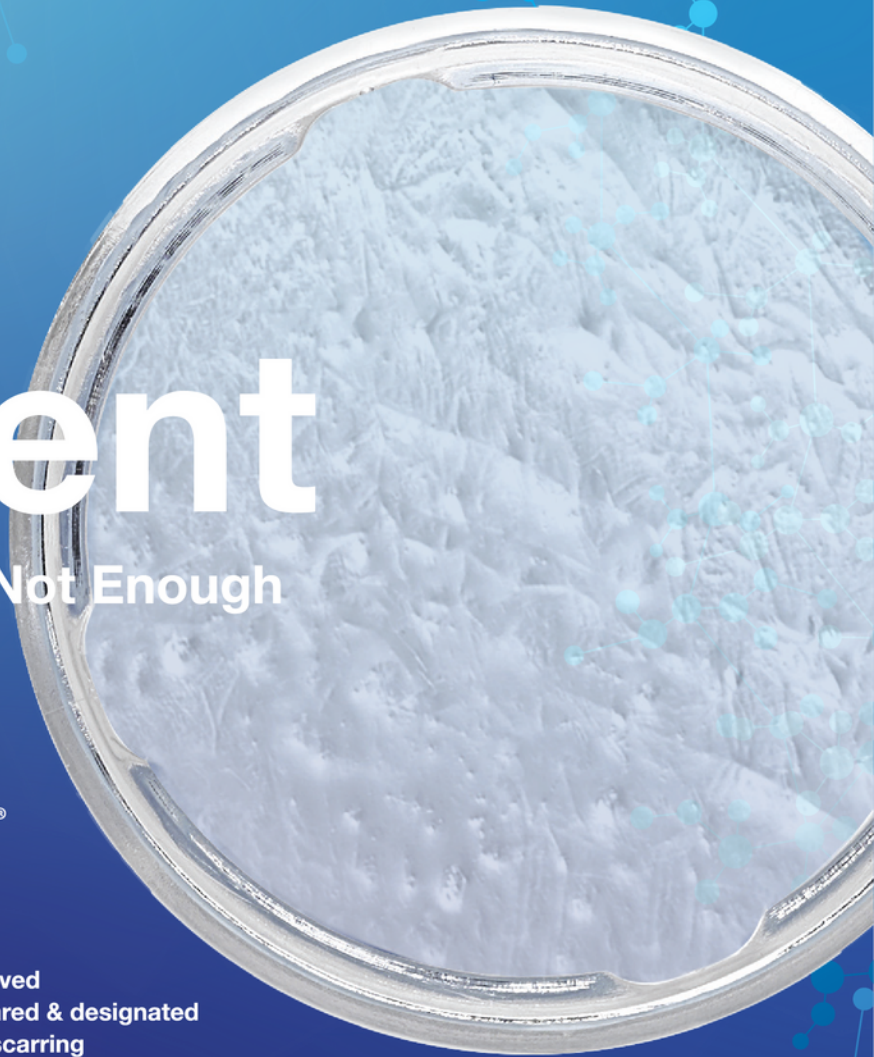
Contains the Only Cryopreserved
Amniotic Membrane FDA cleared & designated
for Anti-inflammation & Anti-scarring



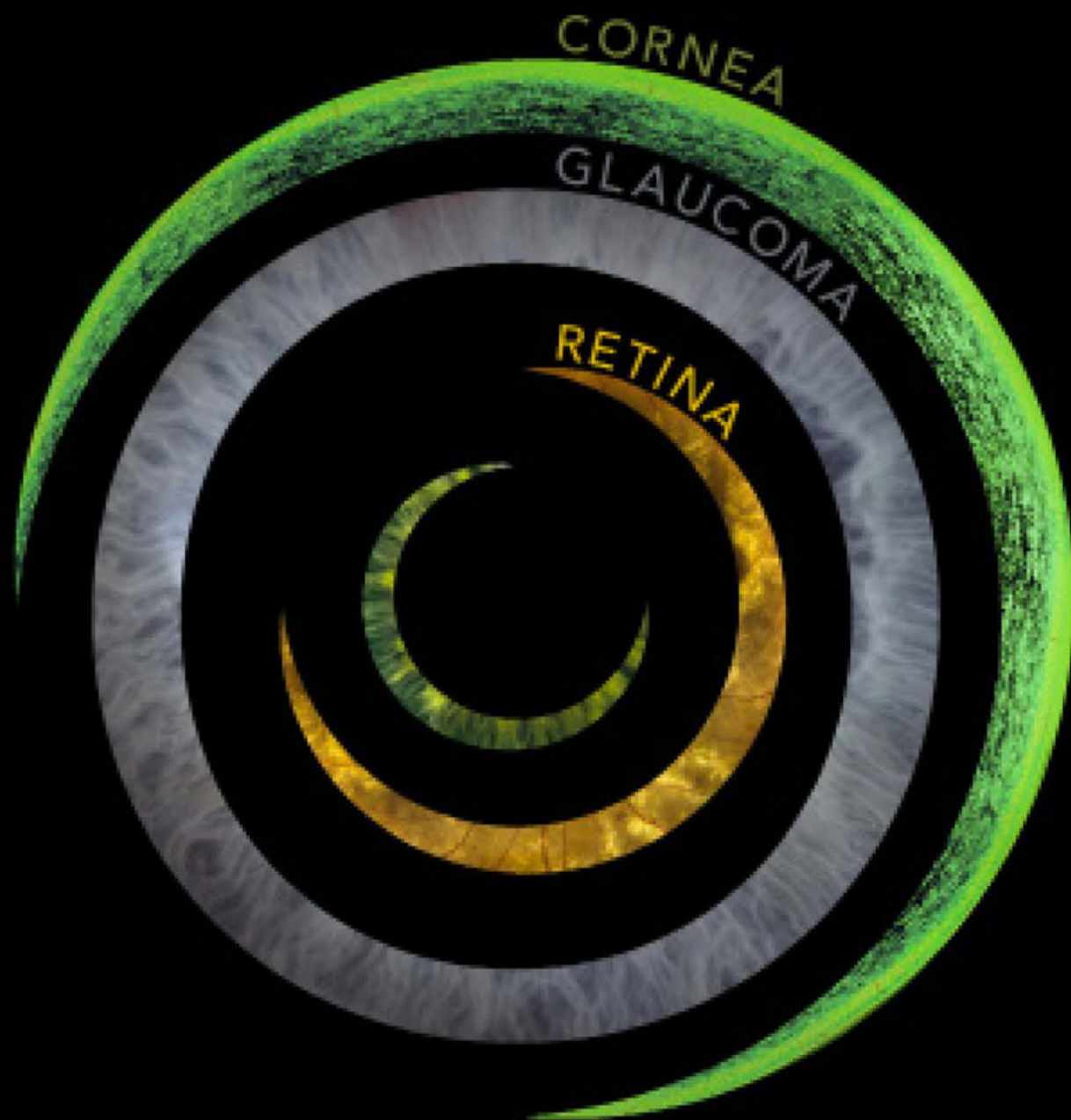
Delivers Patient Satisfaction
due to Premium Outcomes



Easy to Handle and Insert



Find Your Wow Moment at www.YourWowMoment.com



We'll go first

Innovation is at the core of everything we do. At Glaukos, we push the limits of science and technology to solve unmet needs in chronic eye diseases.

Experience a world of firsts in vision care.
Learn more at [Glaukos.com](https://www.Glaukos.com).

GLAUKOS
TRANSFORMING VISION

PM-GL-0076
All rights reserved. ©2021

The One and Only Indicator of MMP-9 for Dry Eye Inflammation



InflammaDry®



InflammaDry is the only test that detects elevated levels of MMP-9, a key inflammatory marker for dry eye. This rapid, point-of-care test produces results in 10 minutes allowing patients to be tested and treated in the same office visit. The test is easy to perform, is minimally invasive and requires no additional equipment. InflammaDry utilizes innovative patented technology, is FDA cleared, CE marked, and CLIA waived.

Quidel is a long-standing leader in the manufacture and sale of rapid, point-of-care diagnostics. Contact your Quidel Account Manager today at **800.874.1517** to learn more about how InflammaDry can help improve the health of your dry eye patients.

quideleyehealth.com

SILVER INDUSTRY PARTNERS

This activity is supported with
unrestricted educational grants
from Alcon Labs and
SunPharma.



Exciting News- Significantly broader coverage for your Medicare patients: **Xiidra is now covered for nearly 2 out of 3* Medicare Part D patients!**¹



XIIDRA IS NOW preferred unrestricted on:

- SilverScript Medicare
- Aetna® Medicare
- Cigna® Medicare
- Express Scripts (ESI®) Medicare EGWP
- WellCare™ Classic PDP

EFFECTIVE MAY 1, 2022



Prescribe with confidence for a 90-day Rx.

Scan to learn how access to Xiidra may be easier than you think.



*Approximately 60% as of 5/1/22.

Novartis does not endorse any particular plan.

Inclusion on formulary or formulary status does not imply superior clinical efficacy or safety. Data from data on file are accurate as of 5/1/2022 and are subject to change without notice.

Reference: 1. Data on file. Fingertip Formulary™ as of 05/2022. Novartis Pharmaceuticals Corp; May 2022.

XIIDRA, the XIIDRA logo and ii are registered trademarks of Novartis AG.

All trademarks are the property of their respective owners.

Learn how to add \$50,000+ to your practice

Carotenoids & Eye Health Workshop

The eye needs more than lutein and zeaxanthin

Join us Saturday afternoon 1:15pm - 2:00pm

**Learn how to add ocular and systemic nutrition
to your practice in a more effective way with
confidence and high patient satisfaction**



Today's patients are seeking preventative care. Be one of the first providers to offer it with the Pharmanex® Biophotonic Scanner, the new standard for carotenoid and macular pigment measurement.

Stop by our table for a complimentary carotenoid/diet/lifestyle assessment.



 PHARMANEX®



Taking just fish oil for dry eye relief is so last century.

One omega, not found in fish oil, has been shown to relieve dry eye in a variety of clinical studies. HydroEye®'s unique, clinically tested formula provides GLA, *The Dry Eye Omega*, plus other key nutrients that work together to provide targeted support that patients prefer.

Effective | Easy to swallow | No smell or taste | Satisfaction guaranteed



Visit our booth or contact us for a free 60-day supply
SBH.com/TryHydroEye or 888-433-4726



SUPPORTER INDUSTRY PARTNERS

This activity is supported with
unrestricted educational grants
from Alcon Labs and
SunPharma.



Providing Effective Dry Eye Care Helps Grow Your Practice

Looking for ways to grow your practice? Effectively treating the dry eye patient can help.

What Makes the Bruder Mask #1 Doctor Recommended?

Bruder compresses are scientifically designed from the inside out. A key differentiator between the Bruder Moist Heat Eye Compress and other masks is the chemistry of the beads inside. Only the Bruder compress contains patented MediBeads®. This is an important distinction.

MediBeads® are silver-infused. Incorporating silver into the bead structure ensures pure, clean, moist heat with every use, helping to repel bacteria and keep eyelids clean.

Eye care practitioners have found that moist heat compresses containing silver-infused MediBeads can help promote healthy outcomes. The Bruder compress helps clear oil glands and allows natural oils to flow back onto the eye to relieve discomfort. It is a patient favorite for its unique design and comfortable fit.



Want to know more about the Bruder family of products?

Visit bruder.com/pro or email eyes@bruder.com



BRUDER LID HYGIENE PRODUCTS



NEW COUNTER DISPLAY and RETAIL PACKAGE



Purchase at order.bruder.com or call **888-827-8337** to speak to a representative.

Bruder | Better. By Design.

©2022 Bruder Healthcare Company Alpharetta, GA 30004



Nutrifill

Scleral, Hybrid, and Gas Permeable (GP) Lens Insertion Solution
PHYSIOLOGIC FORMULA

Patients Can Order Online at [Nutrifill.com](https://nutrifill.com)

Purchase a single carton or bundle and save with a 3-pack.

1 Month

(35 single-use ampoules)

\$31.50

3 Month

(3 Cartons)

\$79.50

(Save \$15)

Sell Nutrifill in your practice!

To create a wholesale
account visit
nutrifill.com
and click on the
physicians page to get
started!

Nutrifill

Scleral, Hybrid, and GP Lens Insertion Solution

Nutrifill preservative free insertion solution is a sterile isotonic buffered solution containing electrolytes (calcium, magnesium, potassium, phosphate, and sodium). Nutrifill is indicated as an insertion solution for large diameter (scleral), hybrid and gas permeable (GP) contact lenses.

Physiologically formulated, the nutrient-rich solution contains 5 natural electrolytes to mimic your natural tears.

What Makes Nutrifill Great?

- 5 electrolytes
- pH 7.4
- Osmolality 300
- 10ml Single-Use Ampoules
- Large ampoules with enough solution to both rinse and fill scleral lenses

nutrifill.com

hello@nutrifill.com

833.266.8262

Contamac